

# SNITSA bord / tables

---

Design Kjell Hammar



## Produktinformation

Snitsa-borden är tekniskt uppbyggda, baserade på en beprövad multifunktionssarg i metall, specialritad för att skapa stabilitet och hållbarhet men även för att öka mobiliteten i bordsbenen. I multifunktionssargen monteras flexibelt bengavlar, kabelrännor och övriga tillbehör.

## Teknisk information

Bordsskivor tillverkas i vit, ljusgrå eller svart standardlaminat, vit högtryckslaminat samt björk- eller ekfanér.  
Skivtjocklek 23 mm. Fasad kant och andra ytor finns som tillval. Erbjuds även i 12 mm vit eller svart kompaktlaminat.  
Utdragsskivor är en smart funktion som ger en ren arbetsyta och som döljer kablar.  
Ben i flera utföranden, med eller utan elektrisk höjning/sänkning, i vitt, silver, svart eller krom.

## Product information

Snitsa tables are technically structured, based on a proven multi-function frame in metal under the table top. This special design increases, the mobility and create stability and sustainability to the table top and the frame.  
Table legs, cable trays and other accessories are mounted easily in the multi-function frame.

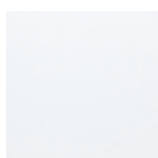
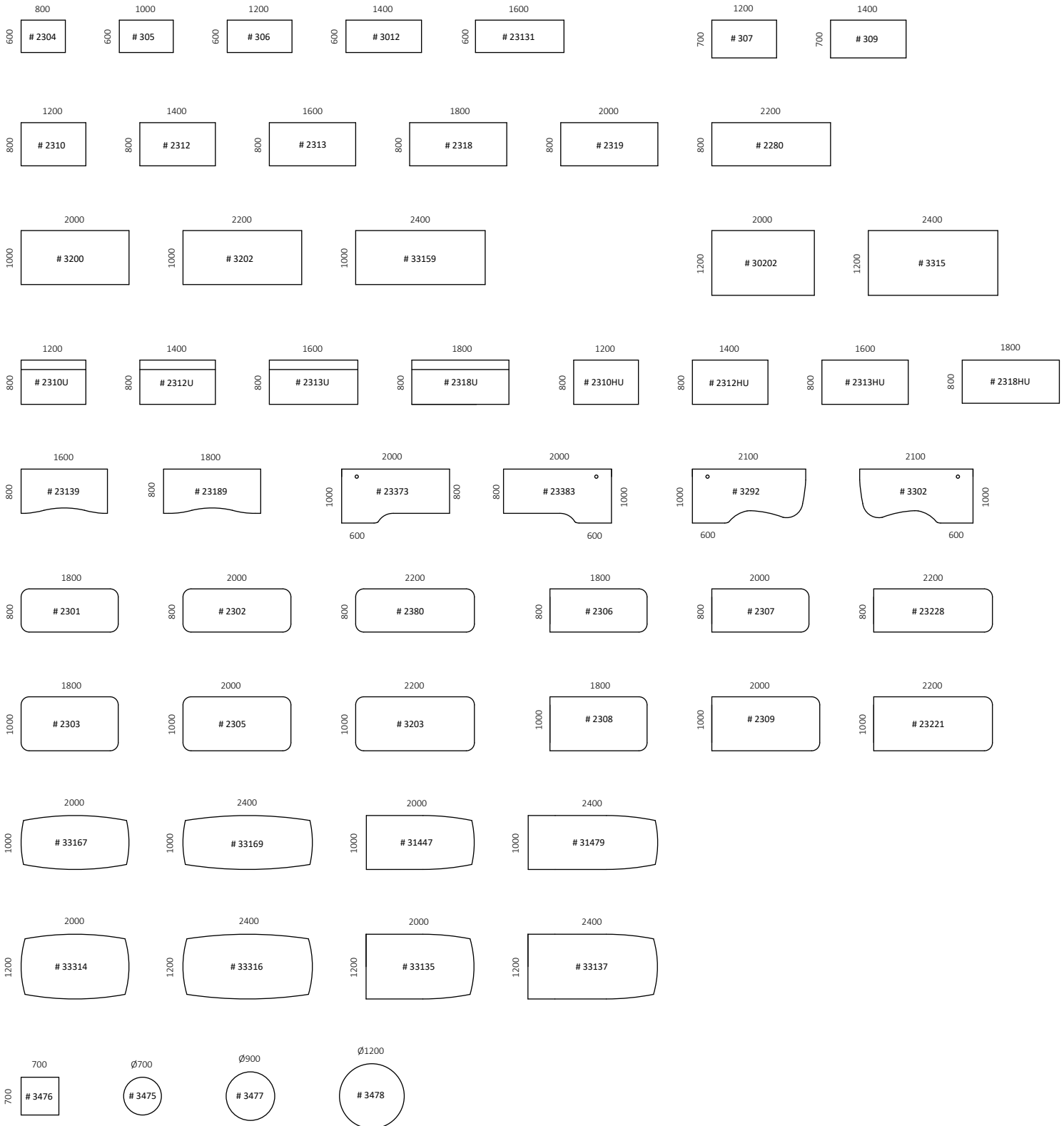
## Technical information

The table tops are produced in white, grey or black laminate, white high pressure laminate and birch or oak veneer.  
Table top thickness 23 mm. Bevelled edge and other surfaces are optional. Table tops are also available in 12 mm white or black compact laminate.  
Sliding table tops is a smart design to hide cables and give a clean impression of your workspace.  
Legs in various versions, with or without height adjustment, to give you alternate of sitting and standing. Choose between white, silver-grey, black or chrome.

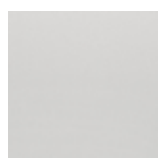
# SNITSA bordsskivor / table tops

## Design Kjell Hammar

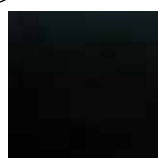
# = Artikelnummer / # = Article Number



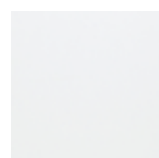
Vit std-laminat  
White melamine



Ljusgrå std-laminat  
Light grey melamine



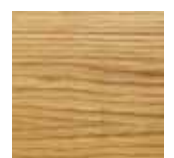
Svart std-laminat  
Black melamine



Vit ht-laminat  
White hp-laminate



Björkfanér  
Birch veneer



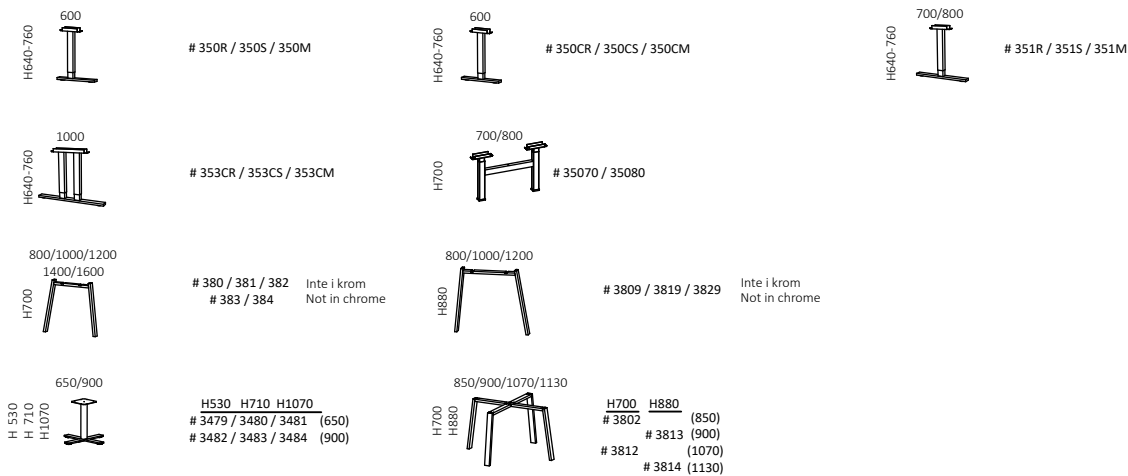
Ekfanér  
Oak veneer



# SNITSA bengavlar / table legs

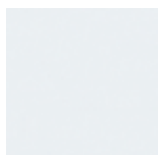
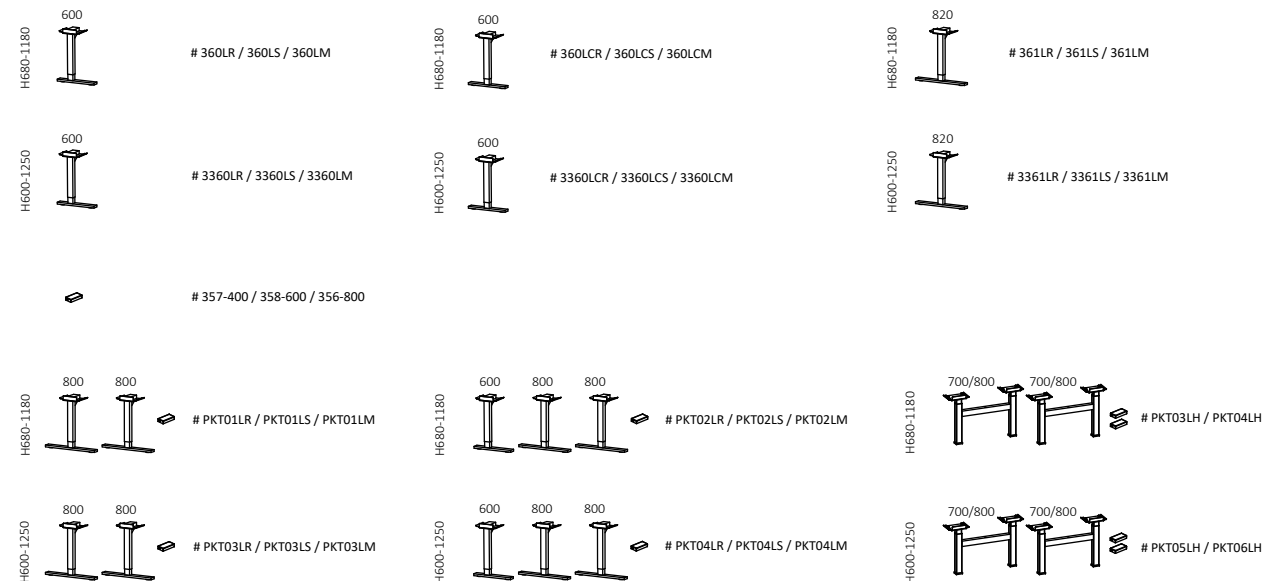
## Design Kjell Hammar

# = Artikelnummer / # = Article Number



# SNITSA elbengavlar / electric legs

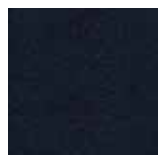
# = Artikelnummer / # = Article Number



Vit  
White



Silver  
Silver grey



Swart  
Black



Krom  
Chrome



Björkfanér  
Birch veneer



Ekfanér  
Oak veneer

Endast / Only: #380, #381, #382



# SNITSA bord / tables

---

Design Kjell Hammar



# SNITSA bord / tables

---

Design Kjell Hammar



# SNITSA bord / tables

---

Design Kjell Hammar



# SNITSA bord / tables

---

Design Kjell Hammar

