

CORE

Design Daniel Lavonius Jarefeldt & Josef Zetterman



Produktinformation

Förvaringssystemet Core består av fyra komponenter. Skåpstomme, stativ, lådsats samt skåpsats. Dessa fyra komponenter ger oändliga kombinationsmöjligheter. Core förvaring ger användaren möjlighet att skapa sina egna lagringssystem som kan varieras och byggas upp igen och igen.

Teknisk information

Core tillverkas i ljusgrå, blå, grön, gul samt röd infärgad mdf. Lådförstyck och dörrar tillverkas även i björkplywood.

Metallstativ tillverkas i svartlack.

Product information

Core storage system consists of four components. Open cabinet frame, stand, box of two drawers and box with two doors. These four components provide unmatched combination options. Core storage allows the user to create their own storage systems that can be varied and rebuilt again and again.

Technical information

Core is manufactured in light grey, blue, green, yellow as well as red colored MDF. Drawer front and doors are also made in birch plywood.

Metal stand is made of black lacquer.

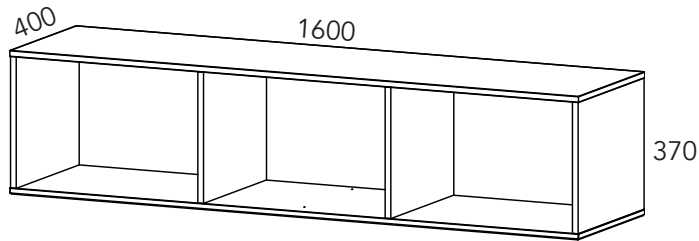
CORE

Design Daniel Lavonius Jarefeldt & Josef Zetterman



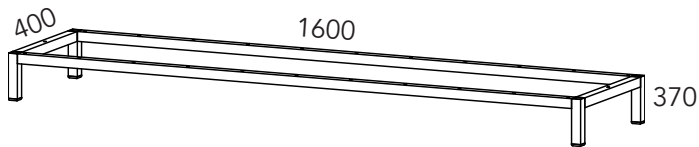
CORE

Design Daniel Lavonius Jarefeldt & Josef Zetterman



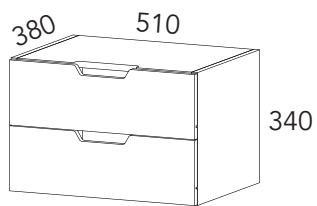
#6000-S0

Open cabinet frame



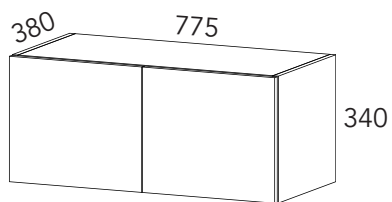
#6010-03

Stand with four legs



#6020-SU

Box of two drawers



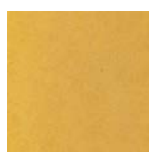
#6030-SU

Box with two doors

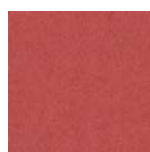
#=article number



Birch plywood



Yellow MDF



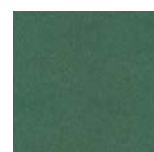
Red MDF



Light grey MDF



Blue MDF



Green MDF



SA Möbler AB | Kyrkefallavägen 3 | 543 34 Tibro | Sweden
Tel +46 504 198 00 | info@samobler.se | www.samobler.se